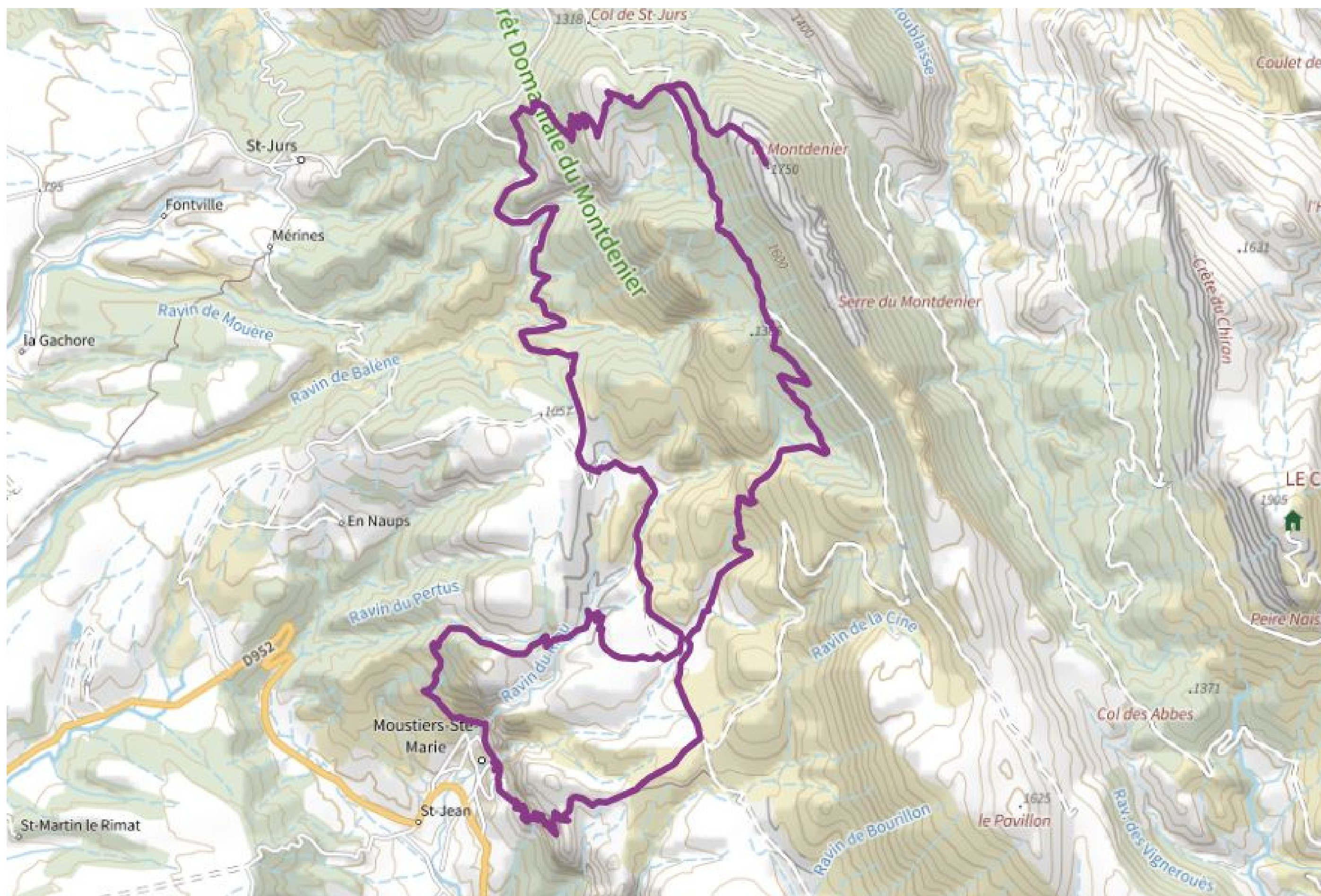


The Agra's and Montdenier's summits



Crédits carte, visuels et photo : ©Canva.com, ©Macarte.ign.fr, ©OTMoustiers



12h



32,1 km



D+ 1350 m

A great route to discover the summits of Montdenier and Agra, with a magnificent 360° view!



After an initial climb to **Vincel**, you will reach the Montdenier campsite. Head for the **Agra summit**, passing through Naverre and the Mouresse ravine.

From l'Agra (1523m altitude), you can enjoy a **stunning 360° panorama**, including a view of the summit of Montdenier (1750m altitude) and the uphill route to get there.

To reach the **summit of Montdenier**, stay on the signposted PR® trail leading to the **Col de la Cabane**.

Here you can enjoy an exceptional panoramic view of the Lac de Sainte-Croix, Mont Chiran and the Mourre de Chanier. You can also catch a glimpse of the Montagne de Lure, the Ventoux and the Vaucluse mountains.

WARNING

This is a demanding tour, requiring a long day's walking. It is reserved for good walkers used to long efforts and totally autonomous hikes.

For the return way, go back to the Col de la Cabane then follow the signs for **Marignol** and its old sheepfold. At this point, the descent will take you back to the Montdenier campsite. Turn left onto the tarmac road. You will return to the village via **Pierrefeu** and the magnificent descent **along the Courchon path**.