

Crédits carte, visuels et photo : ©Canva.com, ©Macarte.ign.fr, ©AD04-TeddyVerneuil



A scenic view of a turquoise lake, likely Lake Placid, surrounded by lush green forests and mountains under a blue sky with wispy clouds. The foreground is filled with dense evergreen trees.

To come **back to Moustiers**, take the same way back. You've done 7km one way, it will be the same the other way.





Crédits carte, visuels et photo : ©Canva.com, ©Macarte.ign.fr, ©OTMoustiers



4h



10 km



D+ 410 m

From the Riou's fortified gate, climb up to the plateau of Vénasclé to discover the heights of Moustiers !

From the center of the village, take **La Clappe street** and go through **the fortified gate**. You will follow the direction of "hameau de Vincel".

The climb **through the undergrowth** will take you to the plateau. Still follow Vincel direction and the yellow signposting until you find a road (near the Montdenier campsite).

Take the direction of **the "hameau de Vénasclé"** on the road, you will walk around 1 km there. You can quit the road to follow **"Pierrefeu"** direction mark.

The path will take you to **the "Chemin de Courchon"**, the next step until you join Moustiers. There's a dozen of turns with **very beautiful points of view on the lake and the village**.







Crédits carte, visuels et photo : © Canva.com, © Macarte.ign.fr, © OTMoustiers



4h



8 km



D+ 610 m

The Moustiers hike which offers the best views of the Gorges du Verdon and Lac de Sainte-Croix!



## WARNING

This trail is not recommended for those prone to vertigo, as there is a passage close to the void with a handrail on the route.

Start from **the Félines car park**, on the Moustiers road towards La Palud-sur-Verdon.

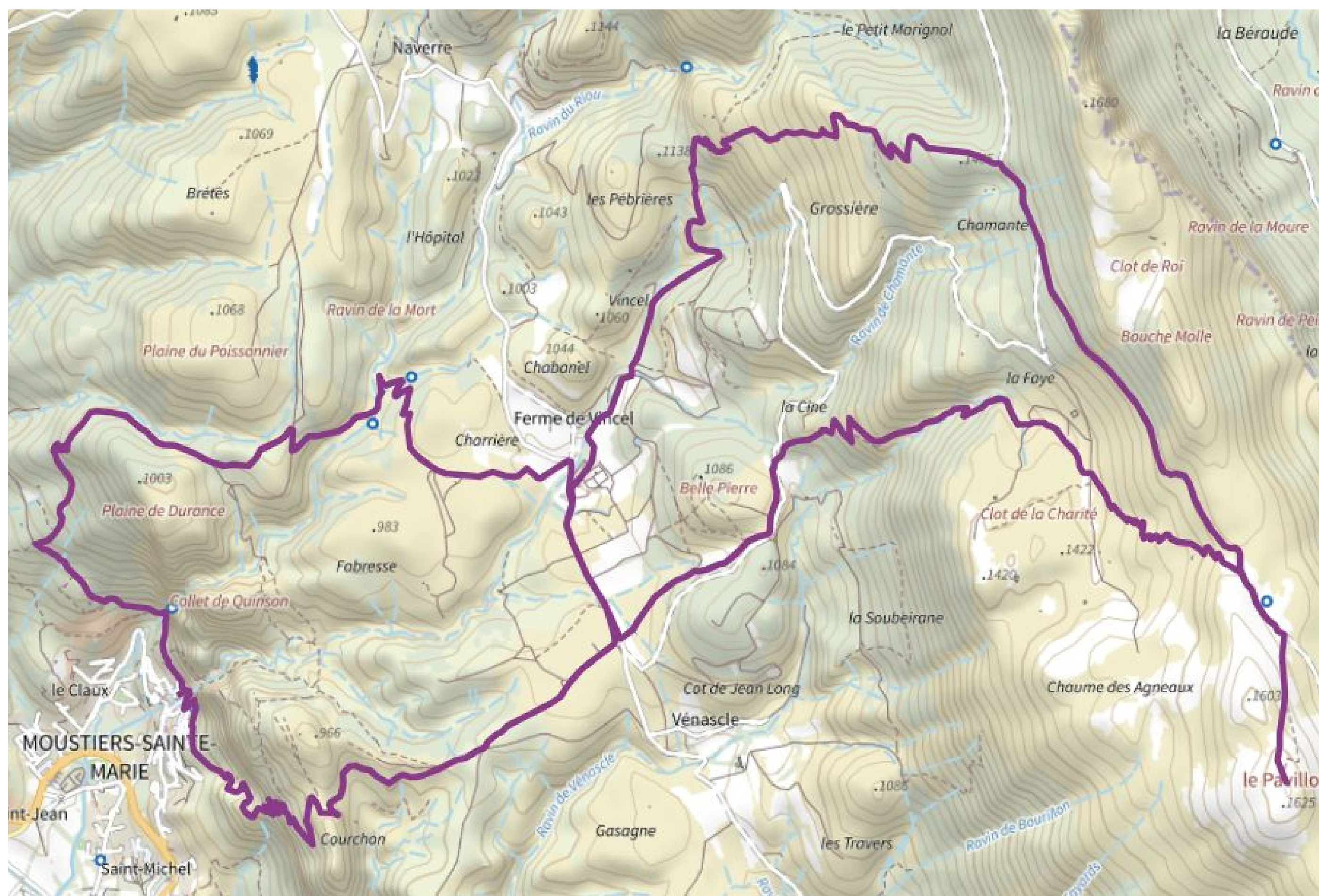
On the other side of the road, take the path **up to the Col de l'Âne**. Continue uphill to reach the **panoramic summit of Plein Voir** (1168 m altitude). From this viewpoint, you can extend the distance slightly by walking back and forth along the ridge. You'll discover **an impressive viewpoint!**

Back at the Col de Plein Voir, take the short, sometimes steep, winding descent towards the Réserve Naturelle Régionale de Saint-Maurin.

Continue **downhill**, following the signs for "Côteau de Félines" and "Bois de Félines".



# The Pavillon



Crédits carte, visuels et photo : © Canva.com, © Macarte.ign.fr, © OTMoustiers



**8h**



**23,6 km**



**D+ 1110 m**

**A long hike to discover the summit of Le Pavillon, the highest point on the southern Montdenier ridge, and its marvellous panorama!**



From Place de l'Église, take Rue de la Clappe. Immediately after crossing the Riou stone bridge, keep to the right and head towards Vincel. At the Montdenier campsite, follow the tarmac road towards the hamlet of Vénasclé (approx. 1km).

At the Parking des Plaines, turn left towards Le Pavillon. This will take you uphill for 5km.

At the junction with the wide forest track at Baisse de Montdenier, walk up to Pied du Pavillon. Finish the ascent by reaching the summit of the Pavillon (1625 m altitude) on an increasingly discrete path dotted with small cairns.

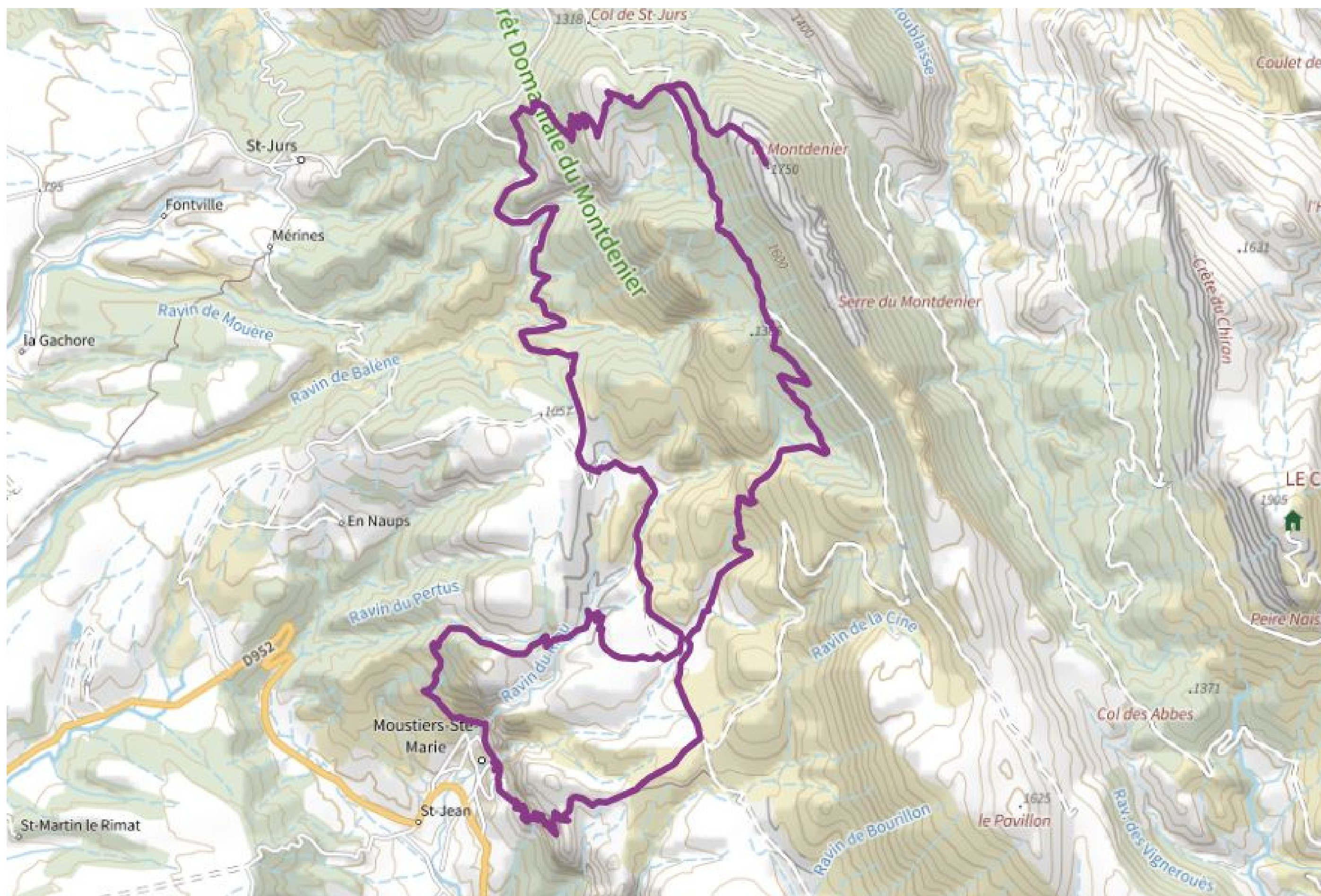
On the way back down, return to the forest track and continue straight ahead. You will come to the Montdenier campsite, cross it and follow the same tarmac road as on the outward journey. You will reach the village via Pierrefeu. The descent along the Chemin de Courchon offers a superb panoramic view of the Lac de Sainte-Croix.



**The short version of the Pavillon summit:** park at the Parking des Plaines (on the Vénasclé plateau) and climb to the summit and back. This variant allows you to enjoy the panoramic views and takes around 10km to complete in 4 hours.



# The Agra's and Montdenier's summits



Crédits carte, visuels et photo : ©Canva.com, ©Macarte.ign.fr, ©OTMoustiers



12h



32,1 km



D+ 1350 m

A great route to discover the summits of Montdenier and Agra, with a magnificent 360° view!



After an initial climb to **Vincel**, you will reach the Montdenier campsite. Head for the **Agra summit**, passing through Naverre and the Mouresse ravine.

From l'Agra (1523m altitude), you can enjoy a **stunning 360° panorama**, including a view of the summit of Montdenier (1750m altitude) and the uphill route to get there.

To reach the **summit of Montdenier**, stay on the signposted PR® trail leading to the **Col de la Cabane**.

Here you can enjoy an exceptional panoramic view of the Lac de Sainte-Croix, Mont Chiran and the Mourre de Chanier. You can also catch a glimpse of the Montagne de Lure, the Ventoux and the Vaucluse mountains.

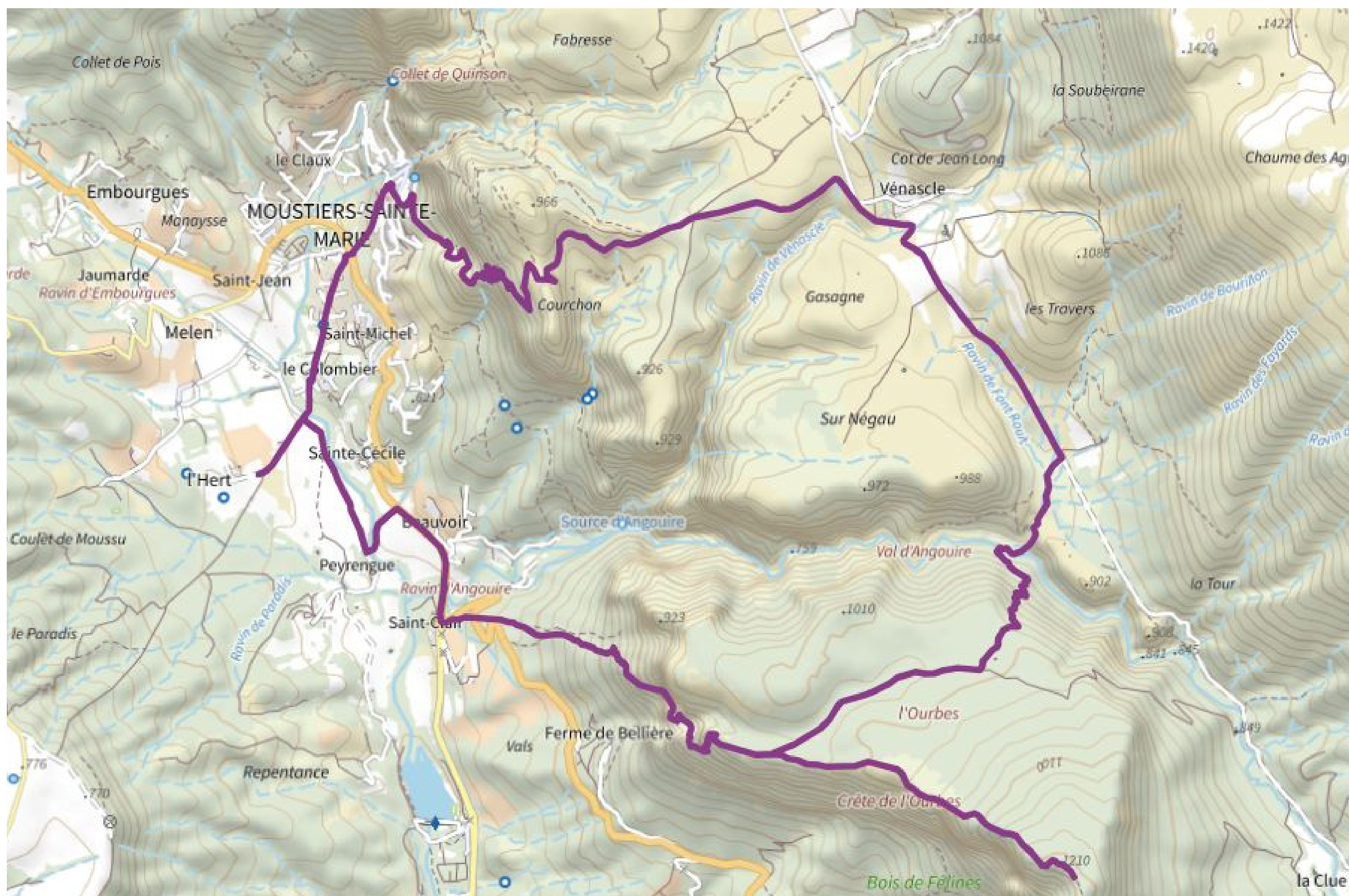
## WARNING

This is a demanding tour, requiring a long day's walking. It is reserved for good walkers used to long efforts and totally autonomous hikes.

For the return way, go back to the Col de la Cabane then follow the signs for **Marignol** and its old sheepfold. At this point, the descent will take you back to the Montdenier campsite. Turn left onto the tarmac road. You will return to the village via **Pierrefeu** and the magnificent descent **along the Courchon path**.



# The Ourbes Ridge



Crédits carte, visuels et photo : © Canva.com, © Macarte.ign.fr, © OTMoustiers



6h



17,2 km



D+ 840 m

Discover the Ourbes ridge, the starting point of the rocky bar that dominates the right bank of the Gorges du Verdon!

The walk **starts at the foot of the village** (next to the motorhome park and sports fields), at the junction of the D952 and the Chemin de Quinson.

Walk down **the chemin de Quinson** and, immediately after the ford, if you wish, continue straight on and back to the entrance to **the old fortified farmhouse of l'Hert** (privately owned, known as "Château de la Reine Jeanne"), a locality in Moustiers.

Then pick up the **GR®4** and start climbing at the Maison du Parc du Verdon roundabout. This is the start of a steep ascent.

After this ascent, **follow the ridge to admire the surrounding views**. The Crête de l'Ourbes marks the start of the rocky bar that runs along the right bank of the Verdon canyon.

The descent to the **Vénasclé plateau** is on a fairly steep path. From the plateau, you can **return to the village along the Courchon path**, which offers a view of Lac de Sainte-Croix.





# The lake by the plains



Crédits carte, visuels et photo : © Canva.com, © Macarte.ign.fr, © OTMoustiers

🕒 4h30



13 km



D+ 350 m

The perfect route for enjoying superb views and overlooking the lake of Sainte-Croix!

The route **starts at the foot of the village** (next to the motorhome park and sports fields), at the junction between the D952 and the Chemin de Quinson.

Walk down **the Chemin de Quinson** and, just after the ford, continue straight ahead. You will pass below the **old fortified farm of l'Hert** (private property). Follow the signs for **"Sainte-Croix du Verdon - Les Plaines"**. You'll start by climbing a fine ascent, although it's short, the gradient is significant on this section.

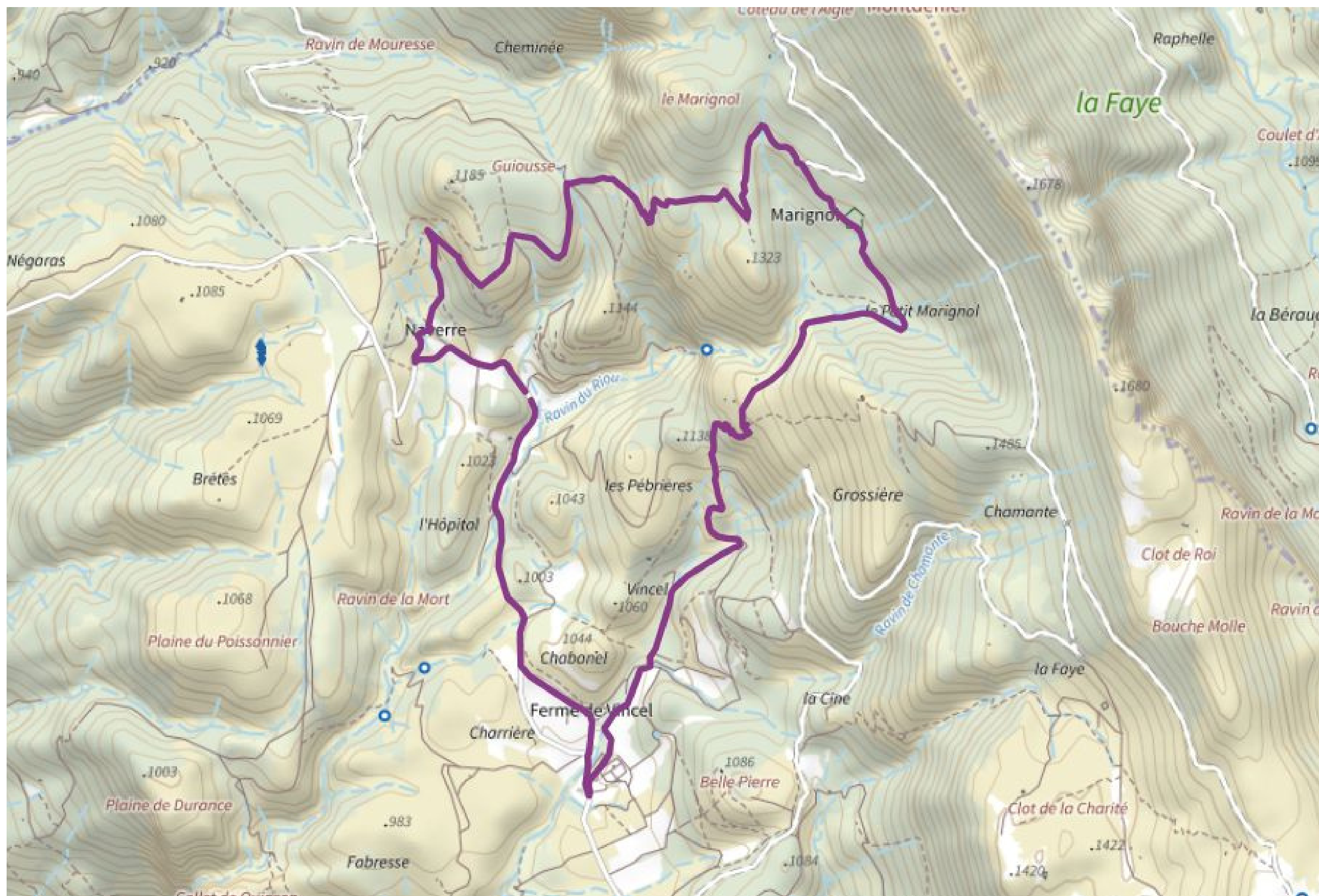
You'll come back down following the track that goes straight off to the left. As you pass near Campagne Féraud, the **first viewpoint** will give you a privileged perspective of the lake of Sainte-Croix.

Near Chaudon, you'll discover an unobstructed panorama with a view of the Galetas bridge, the end of the Gorges du Verdon, and the village of Aiguines at the summit of Grand Margès. From here, **turn left again towards Marzols**.

The descent will be steeper, with around ten switchbacks. At the end of the loop, follow the signs **for Moustiers-Sainte-Marie**. You'll pass the "petit lac" and its campsite, before returning to the Quinson path where you started.







Crédits carte, visuels et photo : © Canva.com, © Macarte.ign.fr, © OTMoustiers

🕒 4h30 ↔ 10,7 km   D+ 380 m

**PartDiscover the Montdenier state forest and the Marignol sheepfold !**



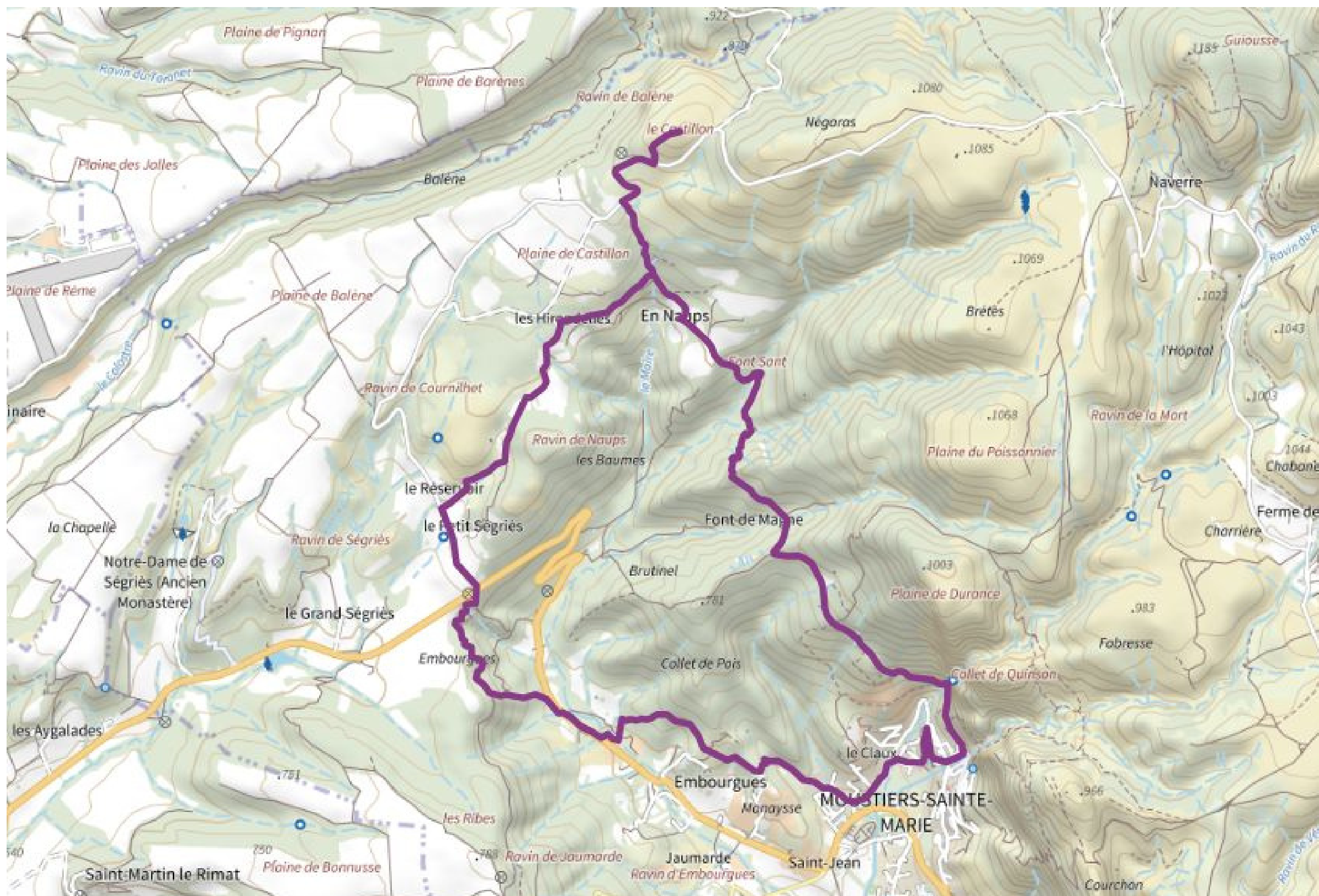
The hike starts in the commune of Moustiers, a 20 minutes drive from the village centre at a place called **Naverre** (GPS coordinates: 43.871255, 6.240891).

Follow the signs for "**Collet de Naverre**" along the main, but seldom used, road to the Vénasclé plateau. There is a steep climb (300m) before you reach **Marignol**, below the Montdenier forest road.

Turn right to reach the **Marignol sheepfold**. This former sheepfold is owned by the ONF (National Forest Organisation) and used as a refuge.

Follow the signs for Vincel to head back downhill. You will arrive at the **Montdenier** campsite. Continue past the **Ferme de Vincel**. After the hamlet, take the tarmac road back to your vehicle.

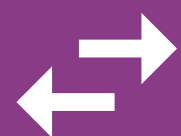




Crédits carte, visuels et photo : © Canva.com, © Macarte.ign.fr, © OTMoustiers



# 5h



**12,4 km**



**D+ 480 m**

**Discover the small summit of Castillon and the privileged view it offers of the surrounding mountains!**

The route starts at **the fortified gate of the Riou**, following the signs for **Vincel**. At **the "L'Automnée" signpost**, follow the signs for **En Naups** and then Le Castillon via Les Baumes.

**⚠ Caution :** landslides occur regularly on this stretch of the route as far as the hamlet of En Naups, so be careful, especially if there has been bad weather in the previous few days.

After passing through **En Naups**, continue along a small country road and turn right towards Le Castillon. **You'll need to walk about 1 km to reach this small summit and back.** In the distance, you'll see the small village of Saint-Jurs and be able to take in the splendid panorama of the Valensole plateau and much of the Montdenier massif.

For the descent, follow the signs for Moustiers. You will pass through the hamlets of Ségriès and Embourgues. ⚠ **Take take care when crossing the D952 twice.**

You'll reach the village via an olive grove before **reaching the Chemin du Paradou and the Avenue Frédéric Mistral**, which will take you back to the village centre.

